

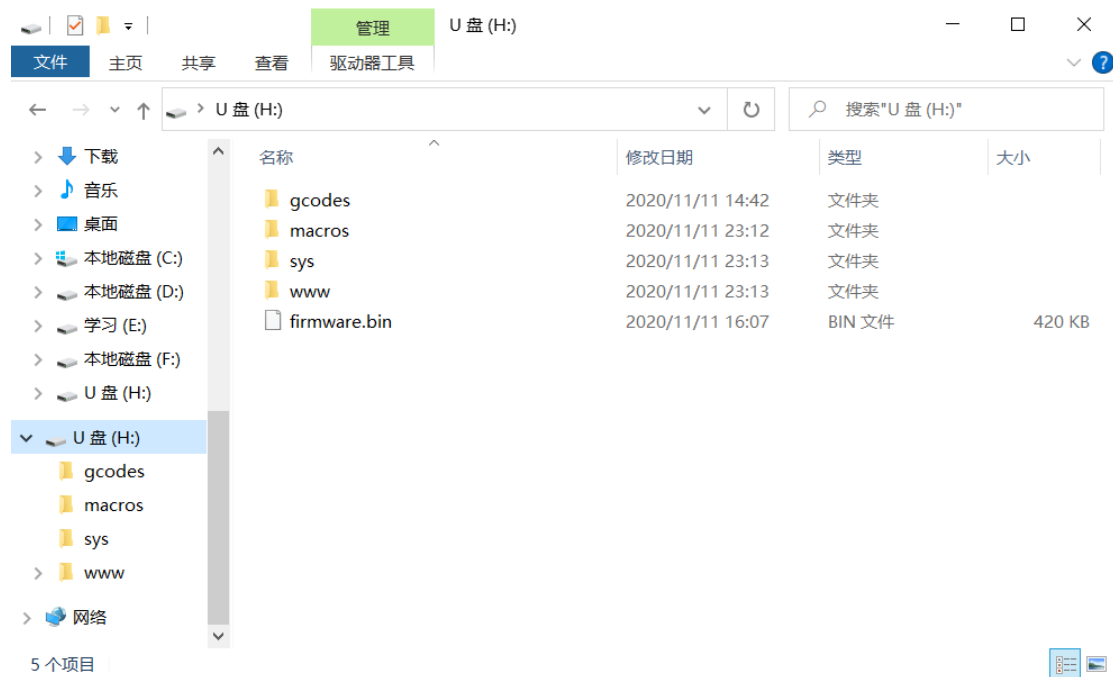
How to use Reprap (duet) firmware

First download the firmware package on FLYmaker's github

Link: <https://github.com/FLYmaker/FLY> RRF-E3

Follow-up upgrade attention: <https://github.com/gloomyandy/RepRapFirmware/wiki>

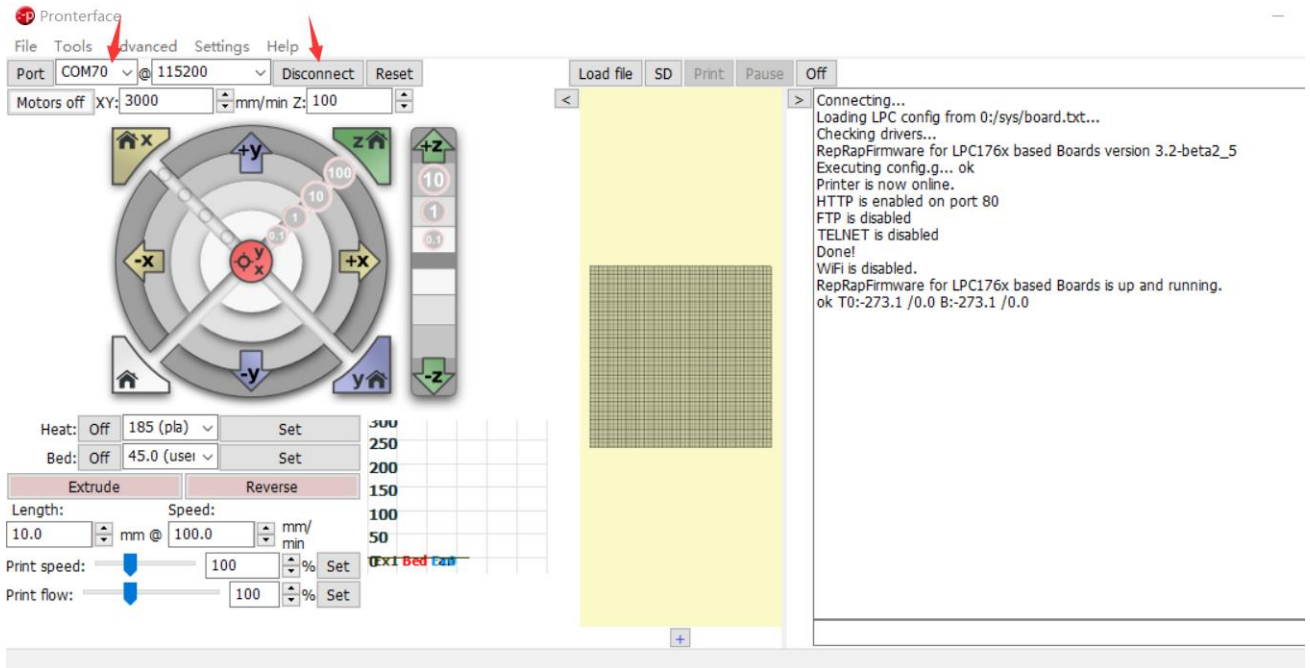
Copy the files in the reprapfirmware folder to the root directory of the SD card



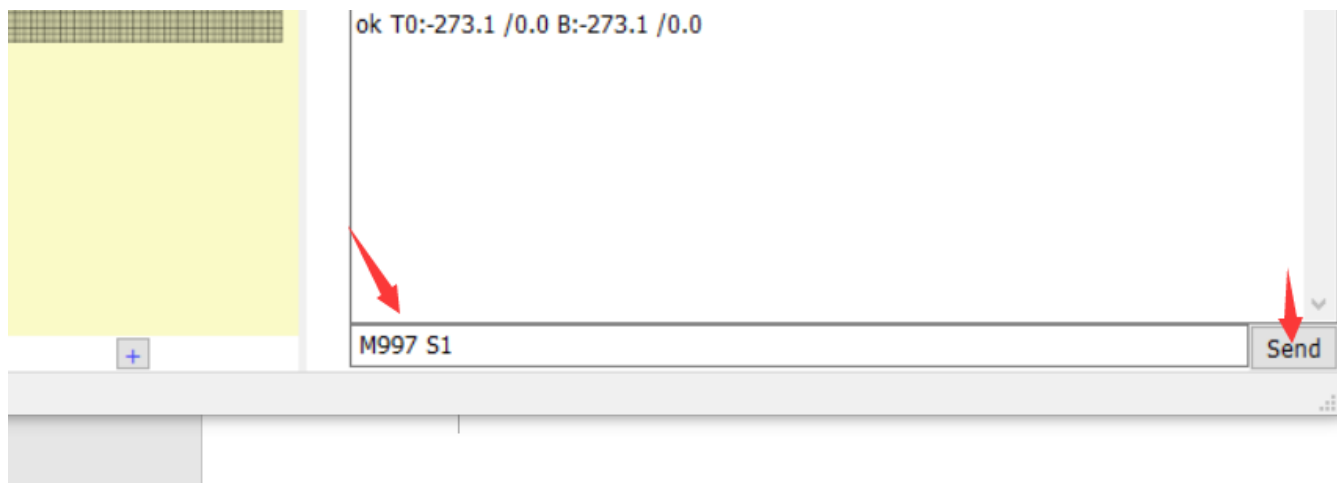
Insert the SD card into the motherboard, restart the motherboard or repower the motherboard

Then plug all the pins around the wifi module as shown in the figure:

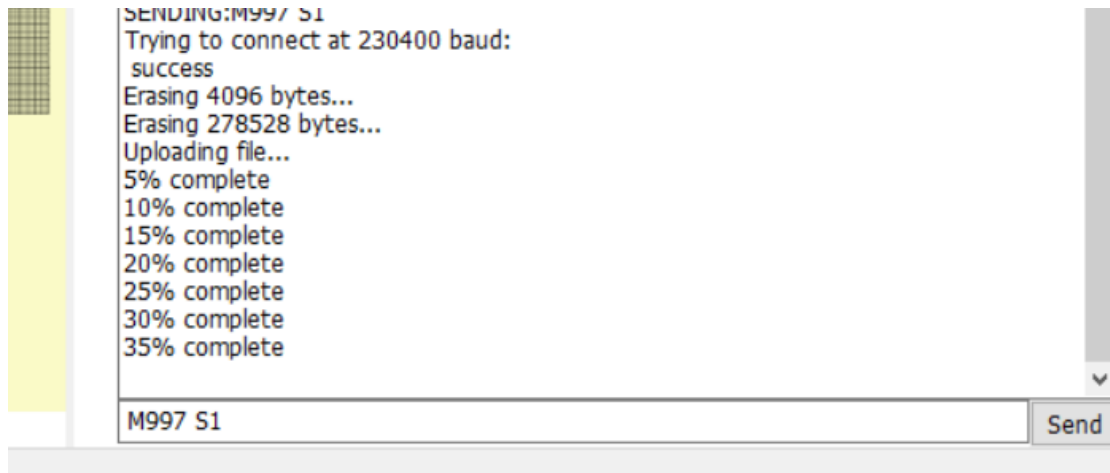
Open the debugging software, select the port and click connect



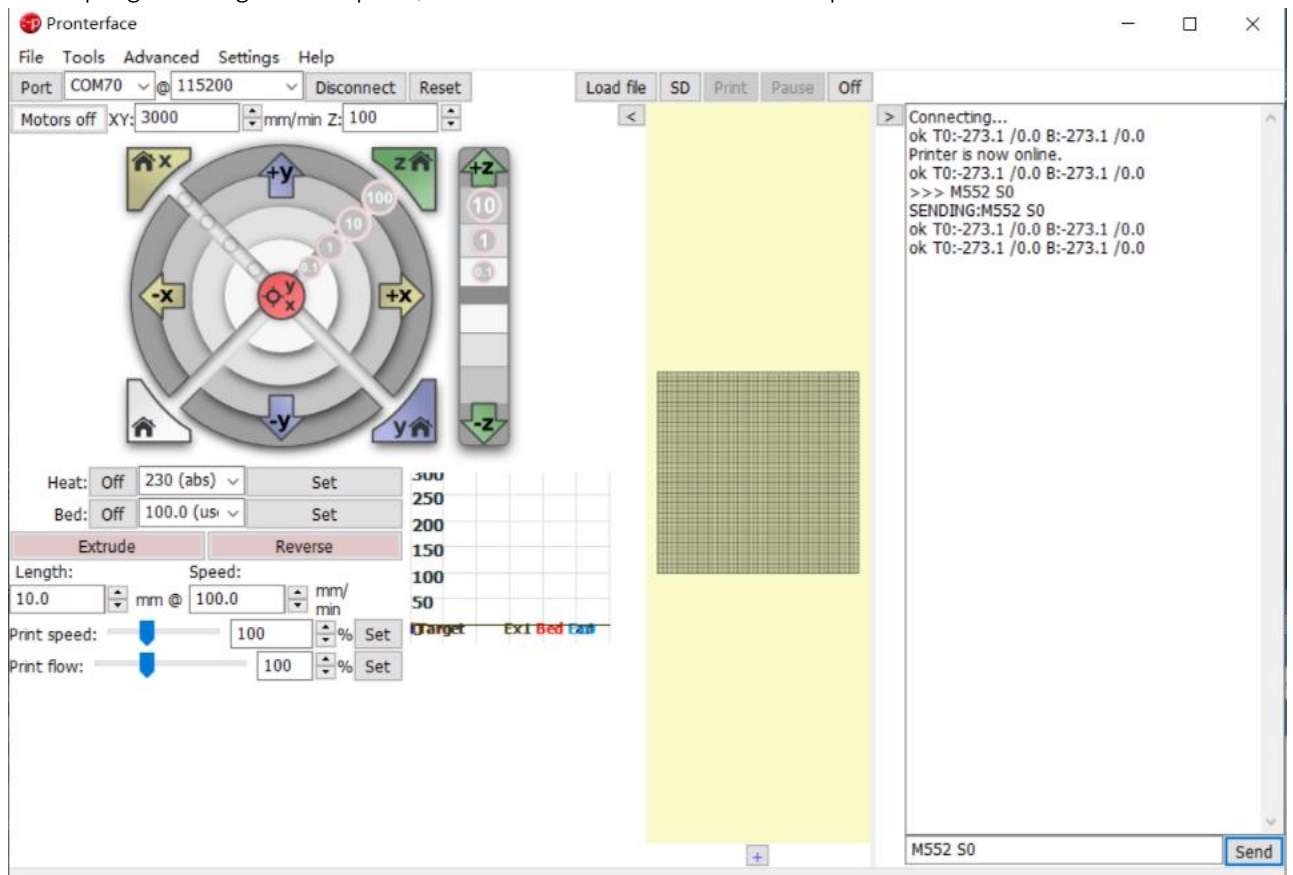
Enter M997 S1 in the lower right corner, and then click send



This step is to burn the motherboard wifi program



After programming is complete, send M552 S0 command to put wifi in idle mode



Send M587 S "WiFi name" P "WiFi password" command

(After entering, the system will automatically remember the WiFi name and password)

If your WiFi password contains English lowercase, please add ('') before the letter to configure according to the following example
WiFi name: FLY2

WiFi password: fly12345

Send as follows

M587 S" FLY2" P"'f'l'y12345"

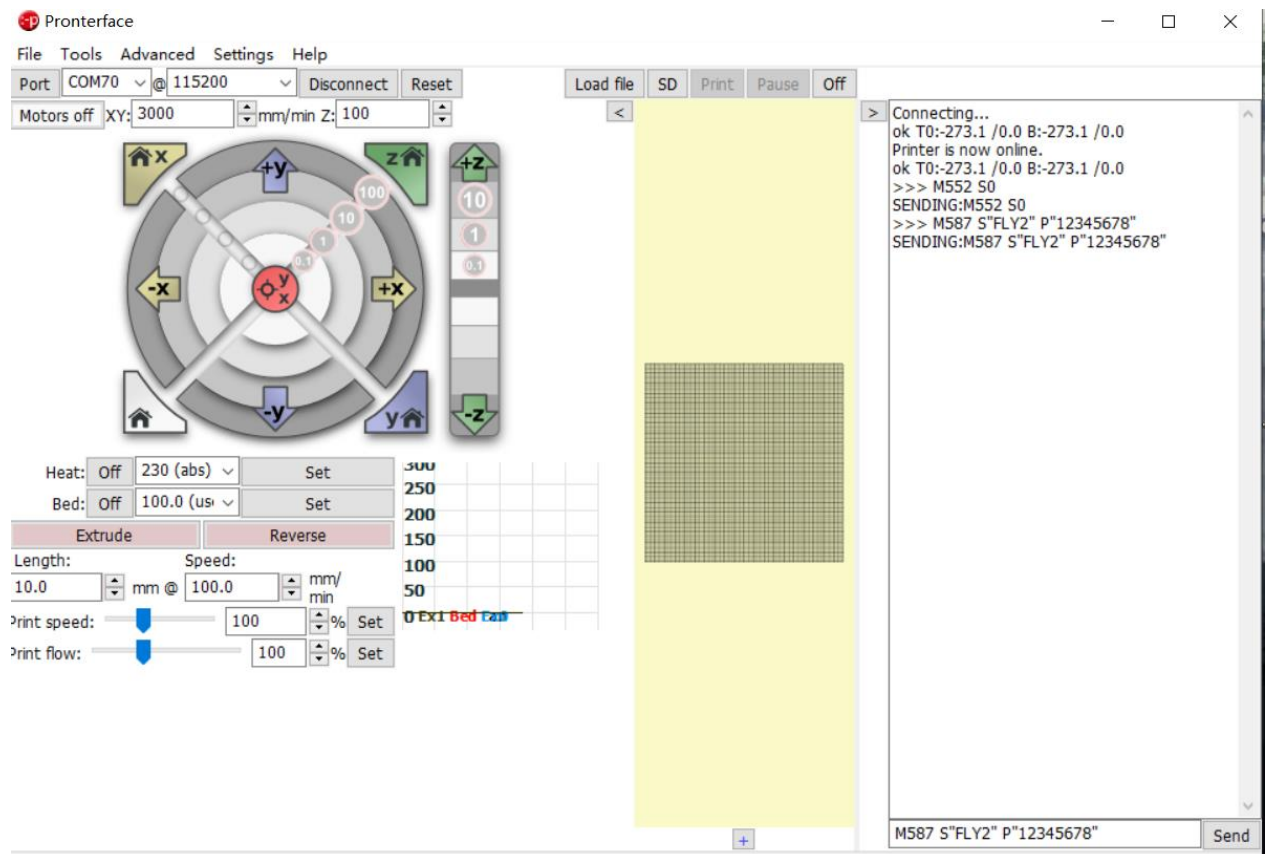
Send as follows:

My configuration WiFi name: FLY2

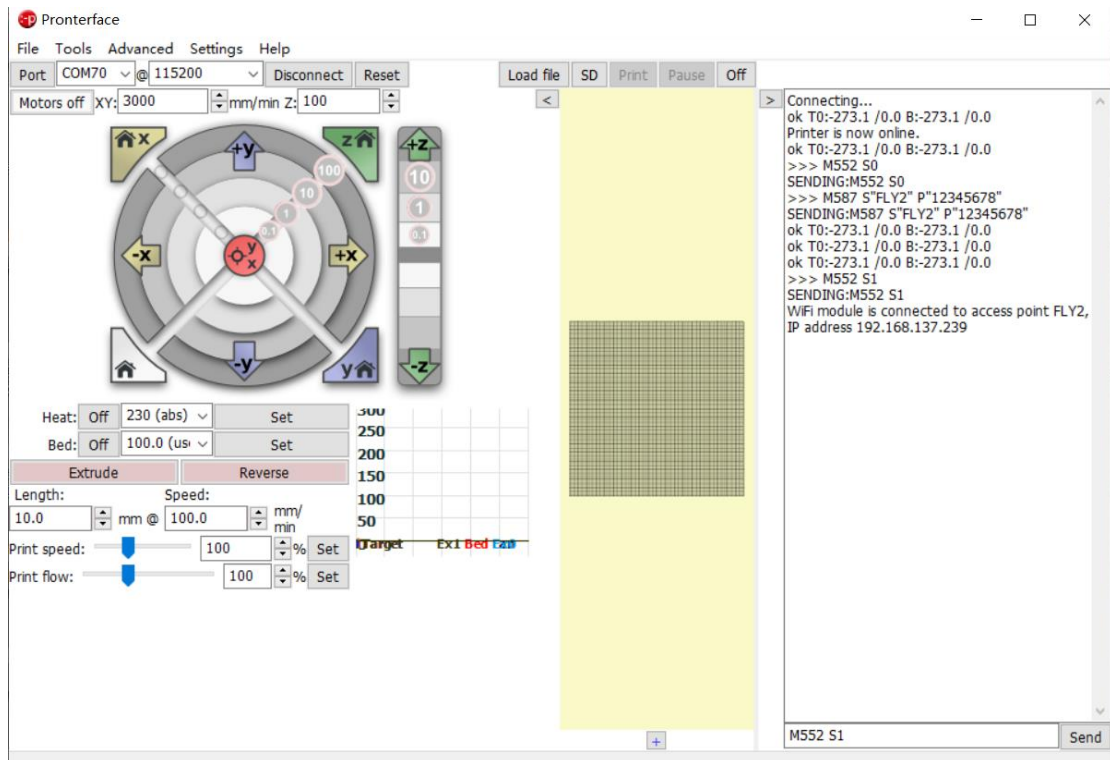
WiFi password: 12345678

I send: M587 S"FLY2" P"12345678"

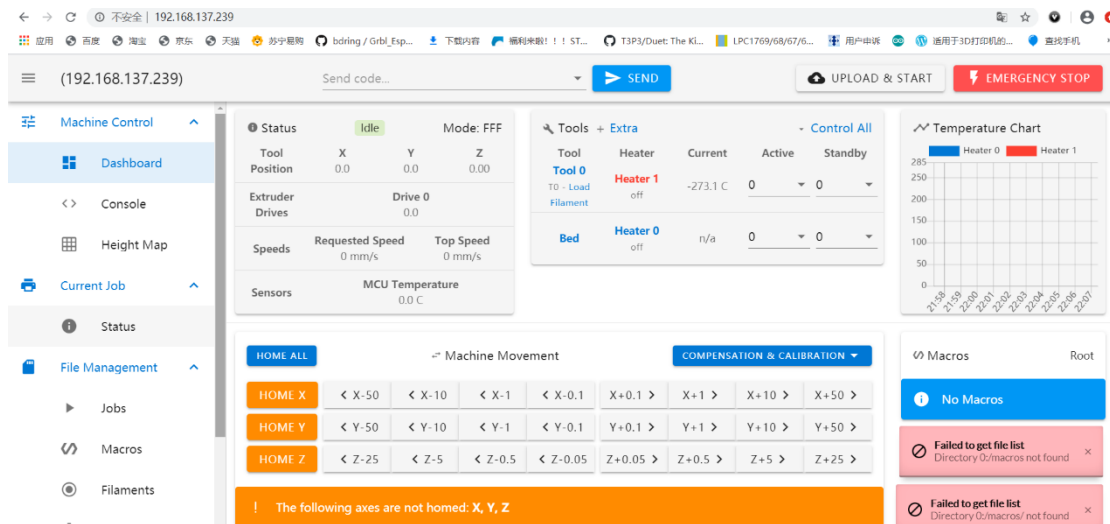
as shown



Then send M552 S1, turn on the network connection
My network IP is 192.168.137.239, enter it into the browser



Enter the IP address into the browser
open the Web page



Configure the machine

<https://jaysuk.github.io/LPCCConfigurator> Open this URL with a browser

← → ↻ jaysuk.github.io/LPCConfigurator/Start

应用 百度 淘宝 京东 天猫 苏宁易购 bdring / GrbL_Esp... 下载内容 福利来啦!!! ST...

Start General I/O Mapping Motors Endstops Heaters Fans Tools Compensation Display Network Finish

Welcome to the RepRapFirmware Configuration Tool (for LPC1768/1769 based boards)

Please follow this wizard to obtain an individual configuration bundle for your printer

If you are using a printer that was originally shipped with RepRapFirmware, you can select a predefined template here:

You can create your own individual configuration by creating a new one from scratch or by loading an existing JSON template:

Custom configuration
 Use existing configuration

Note: If you encounter problems, please report your problems on [GitHub](#).
Some configuration options may not be available yet. In this case please refer to the [Duet3D wiki](#).

This web app is fully open-source and licensed under the terms of the [GPLv3](#). Version 3.1.4-LPC-6

« Back Next »

Choose motherboard:

Start **General** I/O Mapping Motors Endstops Heaters Fans Tools Compensation Display Network Finish

General Preferences

Board: Firmware version: Printer Name: ✓

Read config-override.g file at end of startup process

Printer Geometry

Cartesian CoreXY CoreXZ Delta

X minimum:	X maximum:	Y minimum:	Y maximum:	Z minimum:	Z maximum:
<input type="text" value="0"/> ✓ mm	<input type="text" value="230"/> ✓ mm	<input type="text" value="0"/> ✓ mm	<input type="text" value="210"/> ✓ mm	<input type="text" value="0"/> ✓ mm	<input type="text" value="200"/> ✓ mm

This machine uses individual motors to drives each axis

Other configurations are based on your own machine configuration, network configuration needs to be paid attention to, just click the one I checked, and other configurations are not required

Network Settings

Enable Network via Ethernet or ESP8266

Password for the web interface (HTTP), FTP, and Telnet: ✓ Your WiFi Network Name: ✓ WiFi Password: ✓

espDataReadyPin: ✓ IpcTfrReadyPin: ✓ espResetPin: ✓

Use RX/TX to update ESP8266 via DWC

serialRxPin: ✓ serialTxPin: ✓

Acquire Dynamic IP Address via DHCP

Enable HTTP (required for the web interface)

[< Back](#) [Next >](#)

If you have a FLY touch screen, enter here: **M575 P1 S0 B57600**

Extra Files


Get the latest stable Duet Web Control version

Get the latest stable RepRapFirmware version

Miscellaneous

Enable support for PanelDue

Custom Settings for config.g: [Full list of all available G-codes](#)



[< Back](#) [Finish >](#)

Click on

Enable support for PanelDue

Custom Settings for config.g: [Full list of all available G-codes](#)

[< Back](#)  [Finish >](#)

Download the generated file:

Put the RepRapFirmware files in the /sys directory and extract Duet Web Control bundle to the /www directory of your SD card. If you are using Duet Web Control, upload those files on the Settings page.

- [Duet Web Control 3.1.1](#)

The following system files will be generated:

- [bed.g](#)
- [board.txt](#)
- [config.g](#)
- [homeall.g](#)
- [homex.g](#)
- [homey.g](#)
- [homez.g](#)
- [pause.g](#)
- [resume.g](#)
- [sleep.g](#)
- [stop.g](#)
- [tfree0.g](#)
- [tpre0.g](#)
- [tpost0.g](#)

If you are using Duet Web Control, you can upload the ZIP file(s) without extracting on the Settings page. Otherwise you can extract the contents of this configuration bundle directly to the root of your SD card.

See [this page](#) for further information about the purpose of these files.

[Download JSON template](#) [Download configuration bundle as ZIP file](#)

Unzip

此电脑 > 本地磁盘 (D:) > 1谷歌浏览器下载 > config >

名称	修改日期	类型	大小
sys	2020/11/15 4:41	文件夹	

Replace the sys folder with the SD card sys folder on the motherboard

complete, I wish you a happy use